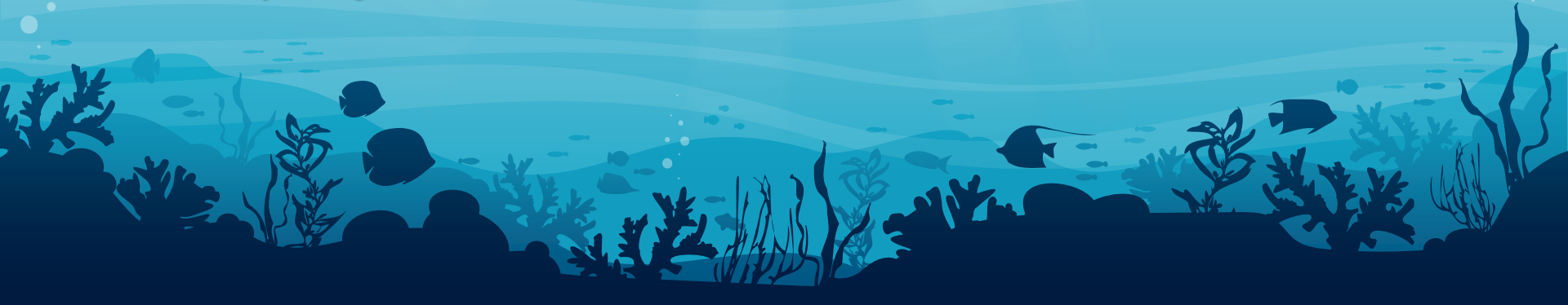
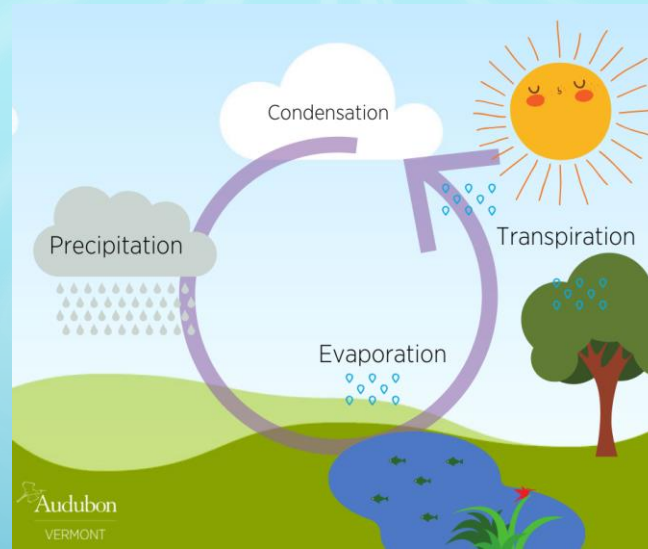


SkyJal CombiSys Rainwater Harvesting

It's a simple, precasted and easy to adopt combination system that filters rainwater and recharge ground water table passively and actively altogether.



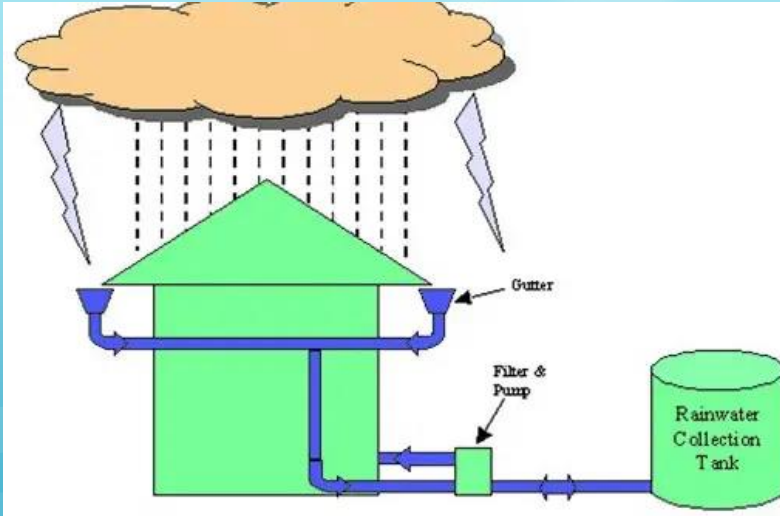


The Water Cycle

- 1- Precipitation
- 2- Infiltration- contributes ground water sources
- 3- Transpiration

- 4- Surface runoff – contributes to surface water sources
- 5- Evaporation
- 6- Condensation

Rainwater Harvesting- Alternative source



Technology used for collecting and storing rainwater for human use from rooftops etc.

Decentralized system – Installed in homes, Industries, Institutions and housing societies etc.

Need for Rainwater Harvesting?

- ❖ **To increase the ground water level**
- ❖ **Groundwater sources can not meet the water demand (Urban area)**
- ❖ **For secondary use like washing, cleaning, gardening etc**
- ❖ **Household do not have centralized water supply system**

Benefits of Rainwater Harvesting

❖ Has multiple uses –

- Domestic consumption
- Toilet flushing, sprinkling
- Ground water recharge,
- Reduces storm runoff and associate flooding

❖ Low maintenance / expenses

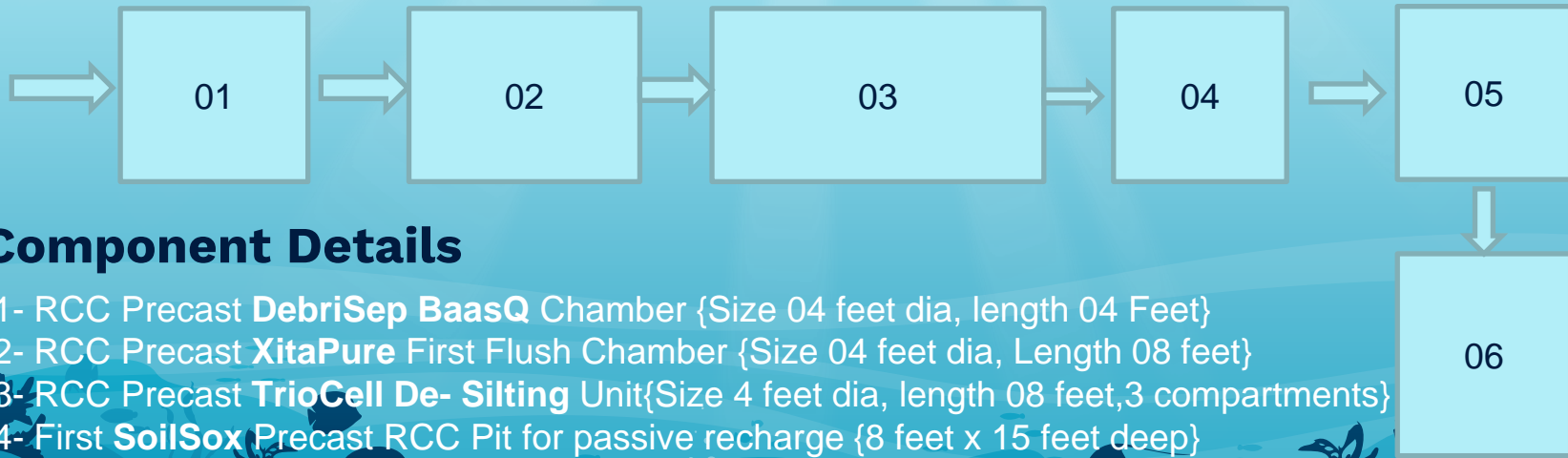
❖ Install once and use long term

❖ Value for money

SkyJal CombiSys Rainwater Harvesting

Let's discuss the perfect solution

Flow chart of SkyJal CombiSys Rainwater Harvesting



Component Details

- 01- RCC Precast **DebriSep BaasQ** Chamber {Size 04 feet dia, length 04 Feet}
- 02- RCC Precast **XitaPure** First Flush Chamber {Size 04 feet dia, Length 08 feet}
- 03- RCC Precast **TrioCell De- Silting** Unit{Size 4 feet dia, length 08 feet,3 compartments}
- 04- First **SoilSox** Precast RCC Pit for passive recharge {8 feet x 15 feet deep}
- 05- Second/ Third **SoilSox** Precast RCC Pit for passive recharge {8 feet x 15 feet deep}
- 06- Filter for borewell incoming {6/8 feet x 15 feet}
- 07- Size / dimensions may vary as per site requirement

Components Details:

A – RCC Precast Debrisep BaasQ

B – RCC Precast XitaPure First Flush

C – RCC Precast TrioCell De-silting

D – RCC Precast SoilSox pit for passive recharge

E – PuriFix Bore well Filter

Uniqueness of SkyJal CombiSys Rainwater Harvesting:

- A – Simple and easy to adopt
- B – Components are Precasted
- C – Can be installed in less time
- D – Combination of filtration, recharge passively and actively



TOZAINDIA.COM
भारत विश्वगुरुः सदा हरितः भव

Our recent reputed clients

D I T University:

A reputed engineering university of Dehradun, adopted SkyJal RWH



Seema Dental College - Rishikesh

This medical college using our SkyJal CombiSys Rainwater Harvesting system. They are collecting, filtering, storing, recharging through soil percolation and actively through water channel.



Mahant Indresh Medical College and research Centre

SkyJal CombiSys Rainwater Harvesting system was approved by authorities and granted permission to get it done in their premises.



J B Institute of Technology

- Impressed by the model
- Their experts discussed with us and they wanted to get it done as the time limit was very less. Being a precast system we meet the deadline.



“

*When the well is dry,
We know the worth of water.*

~Benjamin Franklin



Er Pravesh Gupta
Managing Director (Projects)



Kuldeep Singh Senger
Project Engineer



Sandeep Kumar Gupta
Sr Project Executive



Madhulika Nawani
Project Coordinator

Toza India Pvt Enterprise



229-NeelKanth Arcade
43-Rajpur Road, Dehradun
Uttarakhand, India
248001

www.tozaindia.com

www.SkyJal.com

9058002121, 9758828989

info@SkyJal.com



TOZAININDIA.COM
भारतं विश्वगुरुः सदा हरितः भव

Thanks!

Any question?